



ENGINEERING MANUAL NO. 8

GEAR DRIVES, MOTORS, BEARINGS
STANDARD • MODIFIED • CUSTOM PRODUCTS

Featured in this Catalog...



Pages **i & ii**

HubLoc® Keyless Bushing System

A secure true-running solution for our most popular hollow bore products!

Section **K**

Stainless Steel Helical Bevel

Designed for easier cleanability!



Section **H**

HERA® Gear Drives

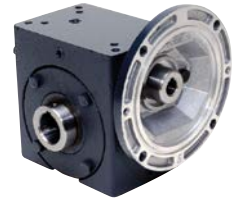
90% Efficiency – 2X More Torque
No-hassle replacement for Worm Gear Drives



Section **B**

PowerCubeX® Worm Speed Reducers

What is the value of X?
See Section B.



Section **K**

Stainless Steel HERA® Gear Drives

90% Efficiency – 2X More Torque
No-hassle replacement for Worm Gear Drives...in stainless steel!



Section **E**

Electric Motors

Expanded Selection!



Section **K**

Hub³® Stainless Steel Worm

Available in seven sizes...in single and double reduction!



Plus...many of the products featured in our Mounted Bearing, Coupling and Shaft Mount catalog...



Application Oriented

Your application may be entirely different than the ones pictured on this page, but our customers have come from a multitude of industries over the past century we've been in business. Our products are used in material handling, packaging, medical equipment, food processing, transportation, construction, aerospace and marine applications...and it doesn't stop here. Over 50% of what we manufacture is either modified standard products or completely customized.

We know your time is valuable, that's why you can count on us for HUB CITY™ product support, services and solutions to simplify your installation. Select from a complete line of standard, modified or custom HUB CITY product designs.



Standard, modified & custom units are built for countless applications.

Solutions Driven

Does your application require CAD drawings? How about a configurator to aid your gear drive selection? Log on to www.regalbeloit.com where you may access our catalog tool for configuring and selecting a gear drive or mounted bearing. Then download our 2D or 3D CAD drawings, browse through the standard and custom product overviews, read what's new and order product literature. Download all of our product literature in an easy to use PDF format. If a custom gear drive is what you are looking for, there are several examples of custom HUB CITY products featured here.

Do you need to speak to a field salesperson about HUB CITY products? Contact information is located on the site, as well as a "Where to Buy" Authorized HUB CITY product distributor directory searchable by zip code.

www.regalbeloit.com

MEDICAL

FOOD PROCESSING

CONSTRUCTION

PACKAGING

TRANSPORTATION

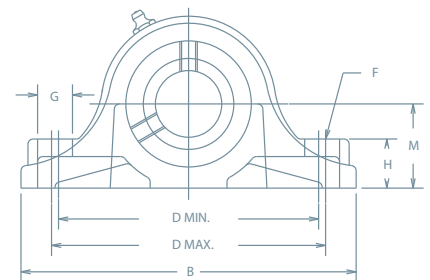
AEROSPACE

AGRICULTURE

MATERIAL HANDLING

RECREATION

AND MANY MORE...



CUSTOMER SERVICE

CATALOG TOOLS

CONFIGURATOR

CAD DRAWINGS

CUSTOM PRODUCTS

STANDARD PRODUCTS

LOCATE DISTRIBUTORS

FIELD SALES OFFICES

Support • Service

And Solutions

LOCATED TO SERVE YOU!

24-Hour assembly and shipment, and on-the-shelf availability of our most sought after HUB CITY™ products!

ABERDEEN CUSTOMER SERVICE AND MANUFACTURING

2914 Industrial Avenue
Aberdeen, SD 57401
(605) 225-0360
(800) 482-2489

FLORIDA ASSEMBLY DISTRIBUTION CENTER

4725 Lakeland Commerce Pkwy., Suite 2
Lakeland, FL 33805
(863) 665-9374

CALIFORNIA ASSEMBLY DISTRIBUTION CENTER

3505 E. Francis Street
Ontario, CA 91761
(909) 325-4052
(800) 551-6661

DALLAS ASSEMBLY DISTRIBUTION CENTER

3251 Royalty Row
Irving, TX 75062
(972) 721-0080
(800) 494-1918

INDIANAPOLIS ASSEMBLY DISTRIBUTION CENTER

9899 E. Bradford Road
Plainfield, IN 46168
(317) 856-4855
(800) 253-4281

ATLANTA ASSEMBLY DISTRIBUTION CENTER

135 Cecil Court
Fayetteville, GA 30214
(770) 461-8334
(800) 777-7159

CHARLOTTE ASSEMBLY DISTRIBUTION CENTER

1011 Van Buren Avenue
Indian Trail, NC 28079
(704) 847-9131

TORONTO ASSEMBLY DISTRIBUTION CENTER

80 Hale Road Unit #1
Brampton, Ontario L6W 3N9
(905) 455-6969
(888) 661-1889



Regal Beloit America, Inc.

2914 Industrial Avenue
Aberdeen, SD 57401

Customer Service: 800-482-2489

Fax: 605-225-0567

Technical Service: 605-225-0360

hubsales@regalbeloit.com

www.regalbeloit.com

APPLICATION CONSIDERATIONS

The proper selection and application of power transmission products and components, including the related area of product safety, is the responsibility of the customer. Operating and performance requirements and potential associated issues will vary appreciably depending upon the use and application of such products and components. The scope of the technical and application information included in this publication is necessarily limited. Unusual operating environments and conditions, lubrication requirements, loading supports, and other factors can materially affect the application and operating results of the products and components and the customer should carefully review its requirements. Any technical advice or review furnished by Regal Beloit America, Inc. and/or its affiliates ("Regal") with respect to the use of products and components is given in good faith and without charge, and Regal assumes no obligation or liability for the advice given, or results obtained, all such advice and review being given and accepted at customer's risk.

For a copy of our Standard Terms and Conditions of Sale, please visit <http://www.regalbeloit.com> (please see link at bottom of page to "Standard Terms and Conditions of Sale"). These terms and conditions of sale, disclaimers and limitations of liability apply to any person who may buy, acquire or use a Regal product referred to herein, including any person who buys from a licensed distributor of these branded products.

Regal, 4-in-1, Black Max, Century, CleanLine, DuraLine, Globetrotter, HERA, Hub City, Hub³, Hub Alloy, HubCap, HubFlex, HubLoc, IndustriaLine, Marathon, MAX GUARD, ModuLine, Poweratio, PowerCubeX, PowerTorque, PowerWash, QD, Spartan, SShera, SyMax, Ultradrud, UltraEfficient, UltraPlus are trademarks of Regal Beloit Corporation or one of its affiliated companies.

©2015, 2018 Regal Beloit Corporation, All Rights Reserved. MCC17010E • Form# 10075E

REGAL®