



# HUB CITY



## POULTRY PROCESSORS

### SOLUTIONS STOCK PROGRAM



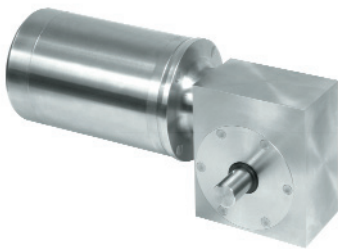
*“Any Way You Want It, Any Time You Need It”*



# Features & Services

- **24 hour assembly and delivery** of all items in the program
- **Localized inventory** in Atlanta, GA
- Helical Bevels and Helical Worms assembled with **choice of standard gray paint, white food grade paint or premium STEEL IT stainless steel coating** (Product of Stainless Steel Coatings, Inc.) for washdown service
- **Personal Delivery** to many key locations within the Georgia Poultry Processing area
- **Expedited delivery** available to anywhere you are!

## Gear Drives



**Hub<sup>3</sup> CleanLine UltraPlus™  
Stainless Steel Worm  
Speed Reducers**◆

**Poweratio® 2000 Helical  
Bevel Gear Drives**

**Poweratio® 2000 Helical  
Worm Gear Drives**

Model	Motor		
	Ratio	Frame Size	Output
SS214	30/1	56C	B or C
	40/1	56C	B or C
	50/1	56C	B or C
	60/1	56C	B or C
SS215	30/1	56C	1.250
	40/1	56C	1.250
	50/1	56C	1.250
	60/1	56C	1.250
SS264	30/1	56C	B or C
	40/1	56C	B or C
	50/1	56C	B or C
	60/1	56C	B or C
SS265	30/1	56C	1.250
	40/1	56C	1.250
	50/1	56C	1.250
	60/1	56C	1.250

Model	Motor		
	Ratio	Frame Size	Output
(Compare to Nord SK9012, David Brown K0432, SEW K47)			
HB2043ES	25.10/1	182TC	1.250
	30.37/1	143TC	1.250
	56.41/1	56C	1.250
	91.94/1	56C	1.250
	110.88/1	56C	1.250
	127.45/1	56C	1.250
(Compare to Nord SK9022, David Brown K0632, SEW K67)			
HB2063ES	25.89/1	182TC	1.50
	30.51/1	182TC	1.50
	58.58/1	182TC	1.50
	91.47/1	143TC	1.50
	115.64/1	56C	1.50
	138.46/1	56C	1.50

Model	Motor		
	Ratio	Frame Size	Output
(Compare to Nord SK02050, David Brown C0420, SEW S47)			
HW2042ES	30.00/1	56C	1.250
	41.84/1	56C	1.250
	63.57/1	56C	1.250
	83.68/1	56C	1.250
	102.00/1	56C	1.250
	136.00/1	56C	1.250
(Compare to Nord SK12080, David Brown C0620, SEW S67)			
HW2062ES	30.00/1	182TC	1.50
	41.25/1	182TC	1.50
	64.41/1	143TC	1.50
	81.43/1	143TC	1.50
	105.00/1	56C	1.50
	140.00/1	56C	1.50

◆ Rebuild-For-Life Longevity program available on Stainless Steel Worm Speed Reducers

## Rebuild-For-Life Longevity Program for Hub<sup>3</sup> Stainless Steel Drives

**IT'S THAT SIMPLE!**

1. Buy and pay for a HUB<sup>3</sup> Stainless Steel Worm Gear Drive one time!
2. When you wear it out, return it to us for a complete rebuild.
3. Pay only the cost of a comparable cast iron unit. (...and if you wear it out again...we will rebuild again under the same program!)◆

◆ Certain limitations apply

# Mounted Bearings

## CleanLine UltraPlus™ Stainless Steel



Model
PB251STWx1
PB251STWx1-1/4S
PB251STWx1-1/4
PB251STWx1-3/8
PB251STWx1-7/16
PB251STWx1-1/2



Model
TPB250STWx1
TPB250STWx1-1/4S
TPB250STWx1-1/4
TPB250STWx1-3/8
TPB250STWx1-7/16
TPB250STWx1-1/2



Model
FB250STWx1
FB250STWx1-1/4S
FB250STWx1-1/4
FB250STWx1-3/8
FB250STWx1-7/16
FB250STWx1-1/2



Model
FB260STWx1
FB260STWx1-1/4S
FB260STWx1-1/4
FB260STWx1-3/8
FB260STWx1-7/16
FB260STWx1-1/2

## CleanLine Plus Thermoplastic Composite



Model
PB251CTWx1
PB251CTWx1-1/4S
PB251CTWx1-1/4
PB251CTWx1-3/8
PB251CTWx1-7/16
PB251CTWx1-1/2



Model
TPB250CTWx1
TPB250CTWx1-1/4S
TPB250CTWx1-1/4
TPB250CTWx1-3/8
TPB250CTWx1-7/16
TPB250CTWx1-1/2



Model
FB250CTWx1
FB250CTWx1-1/4S
FB250CTWx1-1/4
FB250CTWx1-3/8
FB250CTWx1-7/16
FB250CTWx1-1/2



Model
FB260CTWx1
FB260CTWx1-1/4S
FB260CTWx1-1/4
FB260CTWx1-3/8
FB260CTWx1-7/16
FB260CTWx1-1/2

## Accessories

### Torque Arm Kits for Helical Worm Gear Drives

Model
HW2042 – 0259-00015
HW2062 – 0259-00011

### Torque Arm Kits for Helical Bevel Gear Drives

Model
HB2043 – 0259-00009
HB2063 – 0259-00001

### Torque Arm Bracket Kits for Worm Gear Drives

Model
SS210 – 0229-02927
SS260 – 0229-2928

### Flange Mount Kits for Helical Worm Gear Drives

Model
HW2042 – 0259-00013
HW2062 – 0259-00012

### Flange Mount Kits for Helical Bevel Gear Drives

Model
HB2043 – 0259-00010
HB2063 – 0259-00005

### Stainless Steel Clearance Spacers for Gear Drives and Mounted Bearings

Output	Model
5/16"	8471601287
3/8"	8471601288
7/16"	8471601289
1/2"	8471601290

### Thermoplastic Composite Dust Covers for Mounted Bearings

Model	Description
CPCCx1	Closed Cap
CPCCx1-3/16	Closed Cap (fits 1-1/4S)
CPCCx1-7/16	Closed Cap (also fits 1-1/4 & 1-3/8)
CPCCx1-1/2	Closed Cap
CPOCx1	Open Cap
CPOCx1-3/16	Open Cap (fits 1-1/4S)
CPOCx1-7/16	Open Cap (also fits 1-1/4 & 1-3/8)
CPOCx1-1/2	Open Cap
CPSEALx1	Seal for Open Cap
CPSEALx1-1/4S	Seal for Open Cap
CPSEALx1-1/4	Seal for Open Cap
CPSEALx1-3/8	Seal for Open Cap
CPSEALx1-7/16	Seal for Open Cap
CPSEALx1-1/2	Seal for Open Cap

## Modified and Custom Designs

If you don't find exactly what you need in this brochure, Hub City has the capability and engineering expertise to design and produce custom products. Consult the factory of your Hub City representative with your specifications.

# EXCEPTIONAL SERVICE FOR THE POULTRY PROCESSING INDUSTRY!



## CUSTOMER SERVICE LOCATIONS STRATEGICALLY POSITIONED TO SERVE YOU...

**Hub City Southeast★**  
135 Cecil Court  
Fayetteville, GA 30214  
(770) 461-8334  
(770) 461-1312 Fax

**Hub City Southwest●**  
3251 Royalty Row  
Irving, TX 75062  
(972) 721-0080  
(972) 438-5507 Fax

**Hub City East●**  
1011 Van Buren Avenue  
Indian Trail, NC 28079  
(704) 847-9131  
(704) 847-3651 Fax

**Hub City Northeast●**  
6520 Stonegate Drive  
Allentown, PA 18106  
(610) 391-9298  
(610) 391-9172 Fax

**Hub City Headquarters†**  
2914 Industrial Avenue  
Aberdeen, SD 57402  
(605) 225-0360  
(800) 482-2489  
(605) 225-0567 Fax

★ Stocking Service Location

● Customer Service Location

† Customer Service Headquarters Location

**24-HOUR ASSEMBLY AND SHIPMENT, AND ON-THE-SHELF AVAILABILITY OF OUR MOST SOUGHT AFTER PRODUCTS.**



A REGAL-BELOIT COMPANY

For more info on the Poultry Processors Stock Program, go to:  
[www.hubcityinc.com/poultryprocess.html](http://www.hubcityinc.com/poultryprocess.html)

2914 Industrial Avenue ■ P.O. Box 1089 ■ Aberdeen, SD 57402  
Phone: (605) 225-0360 ■ Fax: (605) 225-0567  
Email: [sales@hubcityinc.com](mailto:sales@hubcityinc.com) ■ [www.hubcityinc.com](http://www.hubcityinc.com)