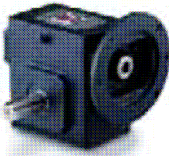




COMPETITOR INTERCHANGE GUIDE

Solid Output Shaft-NEMA C Flange Reducer (Quill Input)

CENTER DISTANCE (Inches)	1.33	1.75	2.06	2.38	2.62	3.25	3.75	4.25	5.25
HUB CITY (Century & PwrCube)	134	184	214	244	264	324	384	454	524
BALDOR	F913	F918	F921	F924	F926	F932	F938	—	—
BOSTON	F713	F718	F721	F724	F726	F732	F738	—	F752
Dodge-Tigear	Q133	Q175	Q200	—	Q262	—	Q350	—	—
Dodge-Tigear-2	13Q	17Q	20Q	23Q	26Q	—	35Q	—	—
Electra	MCS13	MSC17	MSC21	—	MSC26	—	—	MSC400	—
Falk-Omnibox	1133WBM	1175WBM	1206WBM	1238WBM	1262WBM	1325WBM	—	1425WBM	1525WBM
Grove	BMQ213	BMQ218	BMQ220	BMQ224	BMQ226	BMQ232	—	BMQ242	BMQ252
LEESON (800 Series)	BMQ813	BMQ818	BMQ821	BMQ824	BMQ826	BMQ832	—	BMQ842	BMQ852
LEESON (600 Series)	BMQ613	BMQ618	BMQ621	BMQ624	BMQ626	BMQ632	—	—	BMQ652
Morse-Cobra	13Q	18Q	21Q	—	26Q	—	—	—	—
Morse-Invader	713F	718F	724F	—	726F	732F	738F	745F	752F
Morse-Raider	Q133	Q175	Q206	Q237	Q262	Q325	Q375	Q450	Q516
Ohio Gear	BMQ2133	BMQ2175	BMQ2206	BMQ2238	BMQ2262	BMQ2325	—	BMQ2425	BMQ2525
WinSmith	913MDN	917MDN	920MDN	924MDN	926MDN	—	—	943MDN	—



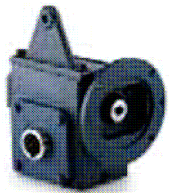
Solid Output Shaft-Non-Flanged Reducer (Basic Unit)

CENTER DISTANCE (Inches)	1.33	1.75	2.06	2.38	2.62	3.25	3.75	4.25	5.25
HUB CITY (Century & PwrCube)	131	181	211	241	261	321	381	451	521
BALDOR	S913	S918	S921	S924	S926	S932	S938	—	—
BOSTON	713	718	721	724	726	732	738	—	—
Dodge-Tigear	S133	S175	S200	—	S262	—	S350	—	—
Dodge-Tigear-2	13S	17S	20S	23S	26S	—	35S	—	—
Electra	M13	M17	M21	—	M26	—	—	M400	M500
Falk-Omnibox	1133WB	1175WB	1206WB	1238WB	1262WB	1325WB	—	1425WB	1525WB
Grove	B213	B218	B220	B224	B226	B232	—	B242	B252
LEESON (800 Series)	B813	B818	B821	B824	B826	B832	—	B842	B852
LEESON (600 Series)	B613	B618	B621	B624	B626	B632	—	—	B652
Morse-Cobra	13U	18U	21U	—	26U	—	—	—	—
Morse-Invader	713B	718B	724B	—	726B	732B	738B	745B	752B
Morse-Raider	U133	U175	U206	U237	U262	U325	U375	U450	U516
Ohio Gear	B2133	B2175	B2206	B2238	B2262	B2325	—	B2425	B2525
WinSmith	913DN	917DN	920DN	924DN	926DN	—	—	943DN	—



Hollow Output Shaft-NEMA C Flange Reducer (Quill Input)

CENTER DISTANCE (Inches)	1.33	1.75	2.06	2.38	2.62	3.25	3.75	4.25	5.25
HUB CITY (Century & PwrCube)	—	185	215	245	265	325	385	455	525
Baldor	HF913	HF918	HF921	HF924	HF926	HF932	HF938	—	—
Boston	HF713	HF718	HF721	HF724	HF726	HF732	HF738	—	—
Dodge-Tigear-2	13QH	17QH	20QH	23QH	26QH	—	35QH	—	—
Electra	—	MHSC17	MHSC21	—	MHSC26	—	—	—	—
Falk-Omnibox	1133WBQM	1175WBQM	1206WBQM	—	1262WBQM	1325WBQM	—	1425WBQM	1525WBQM
Grove	HMQ213	HMQ218	HMQ220	1238WBQM	HMQ226	HMQ232	—	HMQ242	HMQ252
LEESON (800 Series)	HMQ813	HMQ818	HMQ821	HMQ824	HMQ826	HMQ832	—	HMQ842	HMQ852
LEESON (600 Series)	HMQ613	HMQ618	HMQ621	HMQ624	HMQ626	HMQ632	—	—	HMQ652
Morse-Cobra	13QH	18QH	21QH	—	26QH	—	—	—	—
Morse-Invader	713SF	718SF	724SF	—	726SF	732SF	738SF	—	752SF
Morse-Raider	QH133	QH175	QH206	QH237	QH262	QH325	QH375	—	—
Ohio Gear	SM2133MQ	SM2175MQ	SM2206MQ	SM2238MQ	SM2262MQ	SM2325MQ	—	SM2425MQ	SM2525MQ
WinSmith	—	917MDSN	920MDSN	924MDSN	926MDSN	—	—	943MDSN	—



Hollow Output Shaft - Non-Flanged Reducer (Basic Unit)

CENTER DISTANCE (Inches)	1.33	1.75	2.06	2.38	2.62	3.25	3.75	4.25	5.25
HUB CITY (Century & PwrCube)	—	182	212	242	262	322	382	452	522
Boston	H713	H718	H721	H724	H726	H732	H738	—	—
Dodge-Tigear-2	13SH	17SH	20SH	23SH	26SH	—	35SH	—	—
Electra	—	MH17	MH21	—	MH26	—	—	—	—
Falk-Omnibox	1133WBQ	1175WBQ	1206WBQ	1238WBQ	1262WBQ	1325WBQ	—	1425WBQ	1525WBQ
Grove	H213	H218	H220	H224	H226	H232	—	H242	H252
LEESON (800 Series)	H813	H818	H821	H824	H826	H832	—	H842	H852
LEESON (600 Series)	H613	H618	H621	H624	H626	H632	—	—	H652
Morse-Cobra	13UH	18UH	21UH	—	26UH	—	—	—	—
Morse-Invader	713S	718S	724S	—	726S	732S	738S	—	752S
Morse-Raider	UH133	UH175	UH206	UH237	UH262	UH325	UH375	—	—
Ohio Gear	SM2133	SM2175	SM2206	SM2238	SM2262	SM2325	—	SM2425	SM2525
WinSmith	—	917DSN	920DSN	924DSN	926DSN	—	—	943DSN	—

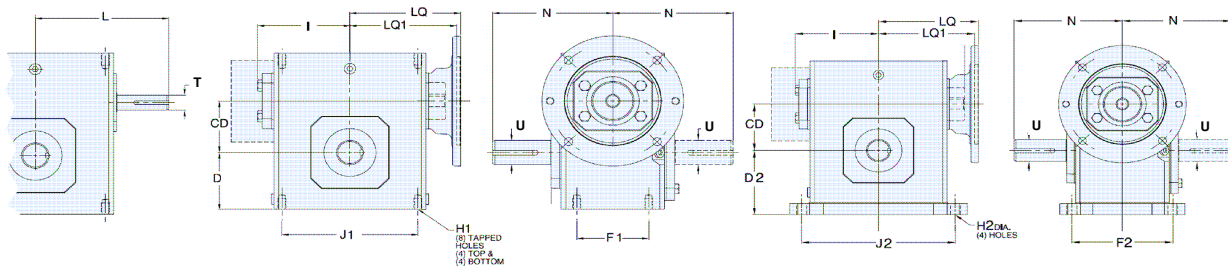


Hub City, Inc., A Regal-Beloit Company • 2914 Industrial Ave., P. O. Box 1089, Aberdeen, SD 57402-1089, U.S.A.

Phone: 605-225-0360 • FAX 605-225-0567 • E-mail: sales@hubcityinc.com • Website: www.hubcityinc.com



COMPETITOR INTERCHANGE GUIDE



HUB CITY 130 Series (1.33" Center Distance)

Manufacturer	CD	D	D2	F1	F2	H1	H2	I	J1	J2	L	LQ	N	T	U
Hub City (PowerCube)	1.33	1.56 [^]	2.25*	2.00+v	3.31*	5/16-18+v	0.34*	2.28	3.25+v	4.38*	3.82	3.63	3.25	0.500	0.625
Hub City (Century)	1.33	1.56	2.25*	1.63	3.31*	1/4-20	0.34*	2.00	2.25	4.38*	3.50	3.38	3.25	0.500	0.625
Baldor	1.33	1.72	2.25	2.00	3.31	5/16-18	0.34	2.12	3.25	4.38	3.91	3.94	4.00	0.500	0.625
Boston	1.33	1.72	2.25	2.00	3.31	5/16-18	0.34	2.12	3.25	4.38	3.91	3.94	4.00	0.500	0.625
Dodge-Tigear	1.33	1.71	2.24	2.00	3.32	1/4-20	0.34	2.44	3.25	4.38	N/A	3.72	4.00	N/A	0.625
Dodge-Tigear-2	1.33	1.71	2.24	2.00	3.32	1/4-20	0.34	2.62	3.25	4.38	4.63	4.41	4.00	0.500	0.625
Electra	1.33	1.72	2.25	2.00	3.31	5/16-18	0.34	2.30	3.26	4.38	3.91	3.22	4.00	0.500	0.625
Falk-Omnibox	1.33	1.72	2.25	2.00	3.31	5/16-18	0.34	2.61	3.25	4.37	3.82	3.46	4.00	0.500	0.625
Grove	1.33	1.72	2.25	2.00	3.31	5/16-18	0.34	2.61	3.25	4.37	3.82	3.46	4.00	0.500	0.625
LEESON (800 Series)	1.33	1.72	2.25	2.00	3.31	5/16-18	0.34	2.61	3.25	4.37	3.82	3.46	4.00	0.500	0.625
LEESON (600 Series)	1.33	1.72	2.25	2.00	3.31	5/16-18	0.34	2.67	3.25	4.38	3.88	3.42	4.00	0.500	0.625
Morse-Cobra	1.33	1.95	1.95	2.85	2.85	0.28	0.28	2.16	2.75	2.75	3.69	3.47	3.54	0.625	0.625
Morse-Invader	1.33	1.72	2.25	2.00	3.31	5/16-18	0.34	2.12	3.25	4.38	4.03	3.94	4.00	0.500	0.625
Morse-Raider	1.33	1.72	2.25	2.00	3.31	5/16-18	0.34	2.12	3.25	4.38	4.03	3.25	4.00	0.500	0.625
Ohio Gear	1.33	1.72	2.25	2.00	3.31	5/16-18	0.34	2.56	3.25	4.38	3.69	3.96	4.00	0.500	0.625
Winsmith	1.33	1.75	2.00	1.38	3.26	5/16-18	0.28	2.83	3.12	4.26	4.12	3.63	4.00	0.625	0.750

HUB CITY 180 Series (1.75" Center Distance)

Manufacturer	CD	D	D2	F1	F2	H1	H2	I	J1	J2	L	LQ	N	T	U
Hub City (PowerCube)	1.75	1.88 [^]	2.75*	2.75+v	4.50*	5/18-18+v	0.41*	2.65	4.19+v	5.75*	4.19	4.00	3.50	0.500	0.750#
Hub City (Century)	1.75	1.88	2.75*	1.63	4.50*	1/4-20	0.41*	2.97	3.13	5.75*	4.00	3.75	4.50	0.500	0.750
Baldor	1.75	2.06	2.75	2.75	4.50	5/18-18	0.41	2.98	4.19	5.75	4.88	4.69	4.31	0.625	0.875
Boston	1.75	2.06	2.75	2.75	4.50	5/18-18	0.41	2.75	4.19	5.75	4.88	4.69	4.31	0.625	0.875
Dodge-Tigear	1.75	1.99	2.74	2.75	4.50	5/18-18	0.44	2.89	4.19	5.75	N/A	4.94	4.31	N/A	0.875
Dodge-Tigear-2	1.75	1.99	2.74	2.75	4.50	5/18-18	0.44	3.17	4.19	5.75	5.05	4.92	4.31	0.625	0.875
Electra	1.75	2.31	2.87	2.94	4.38	5/18-18	0.38	2.81	3.68	5.25	4.41	4.41	4.39	0.625	0.750
Falk-Omnibox	1.75	2.06	2.75	2.75	4.50	5/18-18	0.41	3.24	4.19	5.75	4.45	4.09	4.31	0.625	0.875
Grove	1.75	2.06	2.75	2.75	4.50	5/18-18	0.41	3.24	4.19	5.75	4.45	4.09	4.31	0.625	0.875
LEESON (800 Series)	1.75	2.06	2.75	2.75	4.50	5/18-18	0.41	3.24	4.19	5.75	4.45	4.09	4.31	0.625	0.875
LEESON (600 Series)	1.75	2.06	2.75	2.75	4.50	5/18-18	0.41	3.17	4.18	5.75	4.44	3.99	4.31	0.625	0.875
Morse-Cobra	1.75	2.22	2.22	2.76	2.76	0.28	0.28	2.50	3.38	3.38	4.35	3.80	3.94	0.625	0.875
Morse-Invader	1.75	2.06	2.75	2.75	4.50	5/18-18	0.41	2.75	4.19	5.75	4.68	4.38	4.31	0.625	0.875
Morse-Raider	1.75	2.06	2.75	2.75	4.50	5/18-18	0.41	2.75	4.19	5.75	4.68	3.88	4.31	0.625	0.875
Ohio Gear	1.75	2.06	2.75	2.75	4.50	5/18-18	0.41	3.15	4.19	5.75	4.75	4.44	4.31	0.625	0.875
Winsmith	1.75	2.13	2.44	1.76	3.50	3/8-16	0.41	3.44	3.88	4.62	4.75	4.06	4.75	0.750	1.000

HUB CITY 210 Series (2.06" Center Distance)

Manufacturer	CD	D	D2	F1	F2	H1	H2	I	J1	J2	L	LQ	N	T	U
Hub City (PowerCube)	2.06	2.44	3.00*	2.88+v	4.69*	3/8-16+v	0.47*	3.00	5.00+v	6.38*	4.63	4.50	4.25	0.625	0.875#
Hub City (Century)	2.06	2.44	3.00*	2.00	4.69*	3/8-16	0.47*	2.81	4.00	6.38*	4.44	4.13	4.25	0.625	0.875
Baldor	2.06	2.28	3.00	2.88	4.69	3/8-16	0.47	3.03	5.00	6.38	5.13	5.07	4.69	0.625	1.000
Boston	2.06	2.28	3.00	2.88	4.69	3/8-16	0.47	3.00	5.00	6.38	5.13	5.06	4.69	0.625	1.000
Dodge-Tigear	2.00	2.24	2.99	2.88	4.68	3/8-16	0.50	3.20	5.00	6.38	N/A	5.00	4.69	N/A	1.000
Dodge-Tigear-2	2.00	2.24	2.99	2.88	4.68	3/8-16	0.50	3.45	5.00	6.38	5.13	5.02	4.69	0.625	1.000
Electra	2.15	2.63	3.26	3.26	5.38	3/8-16	0.44	3.31	4.12	6.00	5.47	4.91	5.38	0.750	1.000
Falk-Omnibox	2.06	2.28	3.00	3.00	4.69	5/16-18	0.47	3.61	4.75	6.38	4.82	4.46	4.68	0.625	1.000
Grove	2.06	2.28	3.00	3.00	4.69	5/16-18	0.47	3.61	4.75	6.38	4.82	4.46	4.68	0.625	1.000
LEESON (800 Series)	2.06	2.28	3.00	2.88	4.69	3/8-16	0.47	3.61	5.00	6.38	4.82	4.46	4.68	0.625	1.000
LEESON (600 Series)	2.06	2.28	3.00	2.88	4.68	3/8-16	0.47	3.58	5.00	6.38	4.85	4.40	4.68	0.625	1.000
Morse-Cobra	2.06	2.72	2.72	3.25	3.25	0.41	0.41	2.97	4.38	4.38	4.97	4.72	4.31	0.625	1.000
Morse-Invader	2.06	2.28	3.00	2.88	4.69	3/8-16	0.47	3.00	5.00	6.38	5.06	4.75	4.69	0.625	1.000
Morse-Raider	2.06	2.28	3.00	2.88	4.69	3/8-16	0.47	3.00	5.00	6.38	5.06	4.25	4.69	0.625	1.000
Ohio Gear	2.06	2.28	3.00	2.88	4.69	3/8-16	0.47	3.46	5.00	6.38	5.06	4.75	4.69	0.625	1.000
Winsmith	2.00	2.13	2.63	1.76	3.76	3/8-16	0.41	3.44	4.38	5.00	5.00	4.06	4.75	0.750	1.000

HUB CITY 240 Series (2.375" Center Distance)

Manufacturer	CD	D	D2	F1	F2	H1	H2	I	J1	J2	L	LQ	LQ1**	N	T	U
Hub City (PowerCube)	2.38	2.50	3.25*	2.88	4.88*	3/8-16	0.47*	3.38	5.00	7.06*	5.63	4.88	5.72	4.50	0.625	1.125
Baldor	2.38	2.50	3.25	2.88	4.88	3/8-16	0.47	3.22	5.00	7.06	5.75	5.25	N/A	5.09	0.750	1.125
Boston	2.38	2.50	3.25	2.88	4.88	3/8-16	0.47	3.19	5.00	7.06	5.75	5.25	5.69	5.09	0.750	1.125
Dodge-Tigear-2	2.38	2.50	3.25	2.88	4.88	3/8-16	0.47	3.65	5.00	7.06	5.88	5.47	6.29	5.14	0.875	1.125
Falk-Omnibox	2.38	2.50	3.25	2.88	4.88	3/8-16	0.47	3.77	5.00	7.06	5.51	4.63	5.06	5.14	0.750	1.125
Grove	2.38	2.50	3.25	2.88	4.88	3/8-16	0.47	3.77	5.00	7.06	5.51	4.63	5.06	5.14	0.750	1.125
LEESON (800 Series)	2.38	2.50	3.25	2.88	4.88	3/8-16	0.49	3.77	5.00	7.06	5.51	4.63	5.06	5.14	0.750	1.125
LEESON (600 Series)	2.38	2.50	3.25	2.88	4.88	3/8-16	0.49	3.66	5.00	7.06	5.51	4.63	5.21	5.09	0.750	1.125
Morse-Invader	2.37	2.50	3.25	2.88	4.88	3/8-16	0.47	3.56	5.00	7.06	5.44	5.06	N/A	5.08	0.750	1.125
Morse-Raider	2.37	2.50	3.25	2.88	4.88	3/8-16	0.47	3.56	5.00	7.06	5.44	4.57	N/A	5.08	0.750	1.125
Ohio Gear	2.38	2.50	3.25	2.88	4.88	3/8-16	0.47	3.68	5.00	7.06	5.75	5.06	5.22	5.09	0.750	1.125
Winsmith	2.38	2.88	3.25	2.26	3.76	1/2-13	0.41	4.50	4.38	6.26	6.50	5.38	5.38	5.50	1.000	1.250

*v Hub City Power Cube models (except 240 series) have two bolt patterns on bottom mounting surface only. Includes dimension shown and Century series dimension referenced directly below.

*Order Hub City Universal Base Kit along with corresponding unit.

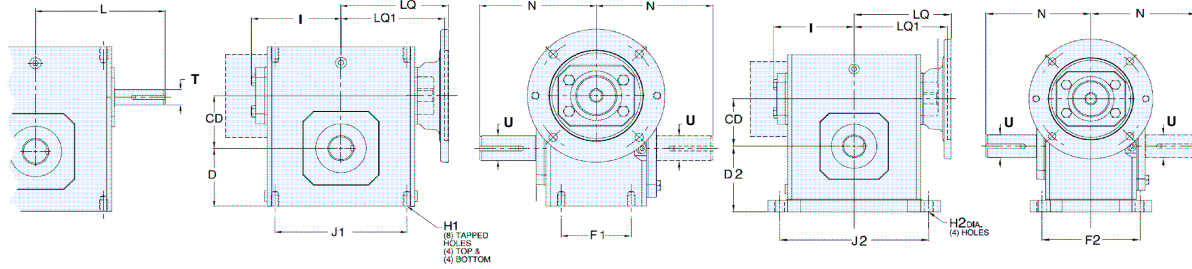
**LQ1 Dimensions apply to 180TC Motor Flange

#Optional Output shaft diameters available-Consult Factory

*Universal mounting spacers available to match most competitors' "D" dimensions



COMPETITOR INTERCHANGE GUIDE



HUB CITY 260 Series (2.625" Center Distance)

Manufacturer	CD	D	D2	F1	F2	H1	H2	I	J1	J2	L	LQ	LQ1**	N	T	U
Hub City (PowerCube)	2.63	2.94	3.69*	3.38+v	5.25*	3/8-16+v	0.53*	3.66	6.38+v	8.00*	5.63	5.16	6.00	4.50	0.625	1.250#
Hub City (Century)	2.63	2.94	3.69*	2.69	5.25*	3/8-16	0.53*	3.19	4.88	8.00*	5.63	4.50	5.00	4.50	0.625	1.250
Baldor	2.62	2.94	3.69	3.38	5.25	3/8-16	0.53	3.69	6.38	8.00	6.31	5.75	6.19	5.62	0.750	1.125
Boston	2.62	2.94	3.69	3.38	5.25	3/8-16	0.53	3.69	6.38	8.00	6.31	5.75	6.19	5.63	0.750	1.125
Dodge-Tigear	2.62	2.87	3.68	3.38	5.25	3/8-16	0.56	3.75	6.38	8.00	N/A	5.72	6.63	5.63	N/A	1.125
Dodge-Tigear-2	2.62	2.87	3.68	3.38	5.25	3/8-16	0.56	3.86	6.38	8.00	5.93	5.51	6.32	5.63	0.875	1.125
Electra	2.69	3.25	3.94	3.38	5.38	3/8-16	0.50	3.87	5.00	6.88	6.00	5.47	N/A	5.19	0.750	1.250
Falk-Omnibox	2.63	2.94	3.69	3.38	5.25	3/8-16	0.53	4.34	6.38	8.00	6.07	5.19	5.62	5.63	0.75	1.125
Grove	2.63	2.94	3.69	3.38	5.25	3/8-16	0.53	4.34	6.38	8.00	6.07	5.19	5.62	5.63	0.750	1.250
LEESON (800 Series)	2.63	2.94	3.69	3.38	5.25	3/8-16	0.53	4.34	6.38	8.00	6.07	5.19	5.62	5.63	0.750	1.125
LEESON (600 Series)	2.63	2.94	3.69	3.38	5.25	3/8-16	0.53	4.31	6.38	8.00	6.12	5.23	5.81	5.63	0.75	1.125
Morse-Cobra	2.62	3.25	3.25	3.50	3.50	0.41	0.41	3.38	5.00	5.00	5.87	5.15	5.88	5.13	0.875	1.125
Morse-Invader	2.62	2.94	3.69	3.38	5.25	3/8-16	0.53	3.69	6.38	8.00	6.23	5.69	6.12	5.63	0.750	1.125
Morse-Raider	2.62	2.94	3.69	3.38	5.25	3/8-16	0.53	3.69	6.38	8.00	6.23	4.81	5.60	5.63	0.750	1.125
Ohio Gear	2.62	2.94	3.69	3.38	5.25	3/8-16	0.53	4.24	6.38	8.00	6.31	5.62	5.78	5.63	0.750	1.125
Winsmith	2.63	3.13	3.50	2.26	3.76	1/2-13	0.41	4.50	4.88	6.50	6.50	5.38	5.38	5.50	1.000	1.250

HUB CITY 320 Series (3.25" Center Distance)

Manufacturer	CD	D	D2	F1	F2	H1	H2	I	J1	J2	L	LQ	LQ1**	N	T	U
Hub City (PowerCube)	3.25	3.25*	4.38*	4.00+v	6.13*	7/16-14+v	0.53*	4.40	7.50+v	9.50*	6.88	6.00	6.38	5.44	0.875	1.375
Hub City (Century)	3.25	3.25	4.38*	2.75	6.13*	1/2-13	0.53*	4.19	6.25	9.50*	6.75	5.50	6.25	5.44	0.875	1.375
Baldor	3.25	3.50	4.38	4.00	6.12	7/16-14	0.53	4.46	7.50	9.50	7.44	6.56	7.00	7.06	0.875	1.375
Boston	3.25	3.50	4.38	4.00	6.13	7/16-14	0.53	4.94	7.50	9.50	7.44	6.56	7.00	7.06	0.875	1.375
Falk	3.25	3.50	4.38	4.00	6.13	7/16-14	0.53	5.02	7.50	9.50	6.76	5.88	6.31	7.06	0.875	1.375
Grove	3.25	3.50	4.38	4.00	6.13	7/16-14	0.53	5.02	7.50	9.50	6.76	5.88	6.31	7.06	0.875	1.500
LEESON (800 Series)	3.25	3.50	4.38	4.00	6.13	7/16-14	0.53	5.02	7.50	9.50	6.76	5.88	6.31	7.06	0.875	1.375
LEESON (600 Series)	3.25	3.50	4.38	4.00	6.13	7/16-14	0.53	4.94	7.50	9.50	7.44	6.56	7.00	7.06	0.875	1.375
Morse-Invader	3.25	3.50	4.38	4.00	6.13	7/16-14	0.53	4.50	7.50	9.50	7.06	6.56	7.00	7.06	0.875	1.375
Morse-Raider	3.25	3.50	4.38	4.00	6.13	7/16-14	0.53	4.50	7.50	9.50	7.06	5.69	6.47	7.06	0.875	1.375
Ohio Gear	3.25	3.50	4.38	4.00	6.13	7/16-14	0.53	4.93	7.50	9.50	7.00	6.31	6.47	7.06	0.875	1.375

HUB CITY 380 Series (3.75" Center Distance)

Manufacturer	CD	D	D2	F1	F2	H1	H2	I	J1	J2	L	LQ	LQ1**	N	T	U
Hub City (PowerCube)	3.75	3.94	4.81*	4.75+v	7.00*	1/2-13+v	0.60*	4.90	8.5+v	10.38*	7.38	6.5	6.88	6.69	1.00	1.50
Hub City (Century)	3.75	3.94	4.81*	4	7.00*	1/2-13	0.60*	4.69	6.88	10.38*	7.13	5.88	6.25	6.69	1.00	1.50
Baldor	3.75	3.88	4.81	4.75	7.00	1/2-13	0.60	5.5	8.5	10.38	8.38	7.00		7.75	1.00	1.625
Boston	3.75	3.88	4.81	4.75	7.00	1/2-13	0.60	5.5	8.5	10.38	8.38	7.00		7.75	1.00	1.625
Dodge-Tigear-2	3.50	3.99	4.99	4.00	6.13	7/16-14	0.60	4.81	7.5	9.50	7.50	7.11	7.35	7.06	0.875	1.50
Falk	NA	NA	NA	NA	NA	NA	NA	NA	NA	NA	NA	NA	NA	NA	NA	NA
Grove	NA	NA	NA	NA	NA	NA	NA	NA	NA	NA	NA	NA	NA	NA	NA	NA
LEESON (800 Series)	NA	NA	NA	NA	NA	NA	NA	NA	NA	NA	NA	NA	NA	NA	NA	NA
LEESON (600 Series)	NA	NA	NA	NA	NA	NA	NA	NA	NA	NA	NA	NA	NA	NA	NA	NA
Morse-Invader	3.75	3.88	4.81	4.75	7.00	1/2-13	0.60	5.75	8.5	10.38	8.38	6.00		7.75	1.00	1.625
Morse-Raider	3.75	3.88	4.81	4.75	7.00	1/2-13	0.60	5.75	8.5	10.38	8.38	6.00		7.75	1.00	1.625

HUB CITY 450 Series (4.50" Center Distance)

Manufacturer	CD	D	D2	F1	F2	H1	H2	I	J1	J2	L	LQ	LQ1**	N	T	U
Hub City	4.50	4.63	5.63*	3.25	7.63*	5/8-11	0.66*	5.69	8.13	12.13*	8.44	6.75	6.75	7.25	1.125	1.625#
Electra	4.00	4.50	5.75	3.76	8.00	5/8-11	0.81	7.34	7.00	8.50	8.13	6.50	6.91	7.97	1.250	1.750
Falk-Omnibox	4.25	4.44	5.44	5.00	7.62	5/8-11	0.63	6.24	8.50	11.12	9.56	6.77	7.21	8.12	1.250	1.875
Grove	4.25	4.44	5.44	5.00	7.63	5/8-11	0.66	6.10	8.50	11.12	9.57	6.45	7.21	8.12	1.250	1.875
LEESON (800 Series)	4.25	4.44	5.44	5.00	7.63	5/8-11	0.66	6.10	8.50	11.12	9.57	6.45	7.21	8.12	1.250	1.875
Morse-Invader	4.50	4.50	5.63	5.81	7.63	5/8-11	0.66	5.63	9.56	12.13	9.59	6.69	7.47	8.44	1.125	1.625
Morse-Raider	4.50	4.50	5.63	5.81	7.63	5/8-11	0.66	6.42	9.56	12.13	9.59	6.69	7.97	8.44	1.125	1.625
Ohio Gear	4.25	4.44	5.44	5.00	7.50	5/8-11	0.66	6.30	9.50	12.25	9.56	6.77	7.21	8.06	1.125	1.750
Winsmith	4.25	4.38	5.00	3.26	5.76	5/8-11	0.66	5.88	7.50	9.76	8.19	6.63	6.63	8.00	1.250	2.000

HUB CITY 520 Series (5.17" Center Distance)

Manufacturer	CD	D	D2	F1	F2	H1	H2	I	J1	J2	L	LQ	LQ1**	N	T	U	
Hub City	5.17	5.38	6.44*	3.75	8.38*	5/8-11	0.78*	6.16	9.50	14.13*	9.25	7.50	7.50	7.81	1.250	1.750#	
Boston	5.16	5.31	6.44	5.81	8.38	5/8-11	0.78	7.19	11.00	14.13	10.69	N/A	N/A	9.06	1.250	2.000	
Electra	5.00	4.25	5.75	5.26	8.75	3/4-10	0.81	9.50	9.62	9.75	10.25	N/A	N/A	11.31	9.75	1.500	2.000
Falk-Omnibox	5.25	5.12	6.25	5.81	8.38	5/8-11	0.78	7.50	11.00	14.12	10.88	7.85	8.61	9.06	1.250	2.000	
Grove	5.25	5.12	6.25	5.81	8.38	5/8-11	0.78	7.50	11.00	14.12	10.88	7.85	8.61	9.06	1.250	2.000	
LEESON (800 Series)	5.25	5.12	6.25	5.81	8.38	5/8-11	0.78	7.50	11.00	14.12	10.88	7.85	8.61	9.06	1.250	2.000	
LEESON (600 Series)	5.16	5.31	6.44	5.81	8.38	5/8-11	0.78	7.19	11.00	14.13	10.69	N/A	N/A	9.06	1.250	2.000	
Morse-Invader	5.16	5.31	6.44	5.81	8.38	5/8-11	0.78	6.44	11.00	14.13	10.69	N/A	N/A	8.28	9.06	1.250	2.000
Morse-Raider	5.16	5.31	6.44	5.81	8.38	5/8-11	0.78	6.44	11.00	14.13	10.69	N/A	N/A	8.28	9.06	1.250	2.000
Ohio Gear	5.25	5.31	6.44	5.81	8.38	5/8-11	0.78	7.30	11.00	14.13	10.56	8.14	8.58	9.06	1.250	2.000	

+v Hub City Power Cube models (except 240 series) have two bolt patterns on bottom mounting surface only. Includes dimension shown and Century series dimension referenced directly below.

*Order Hub City Universal Base Kit along with corresponding unit.

**LQ1 Dimensions apply to 180TC Motor Flange

#Optional Output shaft diameters available-Consult Factory

^Universal mounting spacers available to match most competitors' "D" dimensions