

HERA™

MADE IN USA

90% EFFICIENCY & 2x MORE TORQUE
in a no-hassle worm gear drive replacement



3 year warranty

Patent Pending

HERA™

High-Efficiency Right Angle Technical Guide

90% Efficiency (all ratios) - Up to 40% Energy Savings - 2x More Torque Capacity

Smaller Motor Requirements - Longer Gearbox Life - Rapid Payback - Less Inventory

It's time to replace out-dated, inefficient gearing technology with the **Hub City HERA™**

Quickly improve operating efficiency with this easy bolt-in, powerful **GREEN** solution!



Why HERA?

- Up to **40% more efficient** than standard worm gearing
- Dimensionally **interchangeable** to up to 4 sizes of worm drives
- Available with a variety of Marathon Premium Efficiency motors for **even more energy savings (recommended)**
- Increased Torque Density and Efficiency allow for **downsizing of units** and motors
- Filled with PAG460 premium synthetic lubricant for **enhanced efficiency** (Meets USDA H1)
- Viton Double Lip Seals **protect against leaks** at higher temperatures
- **Longer life** expectancy than that of standard worm gearing
- **Rapid payback** – Up to \$550 savings per year with each increment of motor hp

Energy Savings Example

	Worm System	HERA System
Gearbox Description	3.25" Worm	HERA45
Gearbox Ratio (to 1)	60/1	59.79
Motor Description	Standard 3-ph	Marathon Globetrotter®
Motor Rating (HP)	3HP	1.5HP
Motor Efficiency	84%	87%
Gearbox Operating Efficiency	57%	90%

Cost of Usable Power	\$580	\$580
Cost of Gearbox Inefficiency	\$437	\$64
Cost of Motor Inefficiency	\$194	\$100
Annual Operating Cost (total)	\$1,211	\$744
Annual Energy Cost Savings		\$468

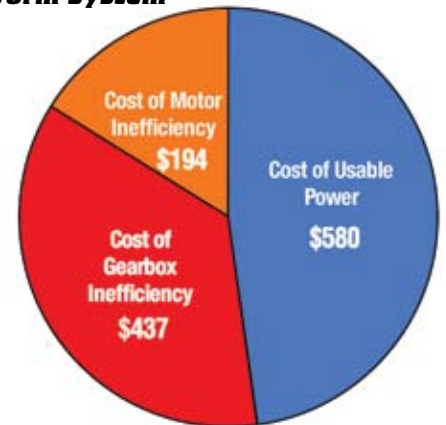
Individual results may vary.

Go Online to Calculate
Your Savings!
[www.hubcityinc.com/
energy_calculator/
efficiency_calculator.html](http://www.hubcityinc.com/energy_calculator/efficiency_calculator.html)

HERA45 BENEFITS

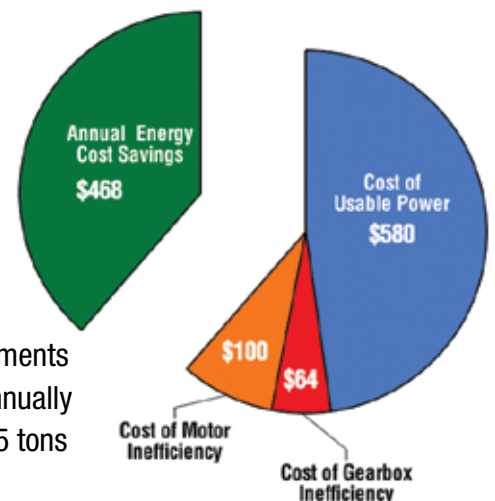
- 39% Energy Savings
- Smaller Motor Requirements
- 4700 kW-hrs Saved Annually
- CO₂ Savings = Over 2.5 tons

Worm System



Annual Operating Cost (total): \$1,211

HERA System



Annual Operating Cost (total): \$744

HERA Ordering Information

HERA45

Basic Model

HERA35
HERA45
HERA55
HERA75

E

Input Style

A: Shaft Input
E: C-face Quill
P: C-face Coupled

S

Output Style

S: (Sleeve) Hollow Bore

28.01

Exact Ratio

See Ratings Chart for Available Ratios

143TC

Frame Size

See Dimensional Table for Available Frame Sizes

1.438

Bore Size

See Stock Bores Table

0259-00096

Shaft Kit

See Accessories Page For available Accessories

0259-00083

B-Base Kit

HERA Selection As Easy As 1, 2, 3, 4

Step 1

Select Basic Model

Using the rating chart below, select basic model and ratio based on application Hp, service factor and output torque requirements (Please note color-coding for quick selection by motor HP). OR, if interchanging from competitor worm drive, use the interchange chart on back of this brochure to select the basic model.

Basic Model Quick Selection By Motor HP (1.0 Service Factor @ 1750 RPM Input)

Nom. Ratio	1/2	3/4	1	1-1/2	2	3	5	7-1/2	10	15	20
7/1	35	35	35	35	35	35	45	45	55		
10/1	35	35	35	35	35	35	45	55	55	75	75
15/1	35	35	35	35	35	45	45	55	75	75	
20/1	35	35	35	35	35	45	55	75	75		
30/1	35	35	35	35	45	55	75	75			
40/1	35	35	35	45	45	55	75				
50/1	35	35	45	45	55	75					
60/1	35	45	45	55	55	75					

Consult factory for high efficiency right angle drives suited for these power ratings.

HERA Power Ratings (@ 1.0 Service Factor)

Nom. Ratio	INPUT RPM	Eff. (%)	HERA35			HERA45			HERA55			HERA75		
			Exact Ratio	Input HP	Output Torque (in. lbs.)	Exact Ratio	Input HP	Output Torque (in. lbs.)	Exact Ratio	Input HP	Output Torque (in. lbs.)	Exact Ratio	Input HP	Output Torque (in. lbs.)
7/1	2500	90	8.02	2.00	364	7.80	8.50	1504	7.94	13.00	2342	-	-	-
10/1	2500	90	11.42	2.00	518	11.36	7.50	1933	10.77	13.00	3177	9.58	18.00	3912
15/1	2500	90	15.60	2.00	708	15.60	7.00	2478	15.05	9.50	3244	15.05	15.00	5122
20/1	2500	90	19.93	2.00	905	19.50	5.88	2600	21.15	8.00	3839	21.15	13.00	6238
30/1	2500	90	29.10	2.12	1400	28.01	4.09	2600	30.14	6.58	4500	30.14	12.43	8500
40/1	2500	90	43.53	1.42	1400	39.98	2.87	2600	43.97	4.51	4500	37.33	10.04	8500
50/1	2500	90	52.50	1.18	1400	52.50	2.18	2600	53.03	3.74	4500	53.03	7.06	8500
60/1	2500	90	58.33	1.06	1400	59.79	1.92	2600	58.92	3.37	4500	58.92	6.36	8500
7/1	1750	90	8.02	4.01	1042	7.80	8.50	2149	7.94	13.00	3346	-	-	-
10/1	1750	90	11.42	3.78	1400	11.36	7.06	2600	10.77	12.89	4500	9.58	27.37	8500
15/1	1750	90	15.60	2.77	1400	15.60	5.14	2600	15.05	9.22	4500	15.05	17.42	8500
20/1	1750	90	19.93	2.17	1400	19.50	4.11	2600	21.15	6.56	4500	21.15	12.40	8500
30/1	1750	90	29.10	1.48	1400	28.01	2.86	2600	30.14	4.61	4500	30.14	8.70	8500
40/1	1750	90	43.53	0.99	1400	39.98	2.01	2600	43.97	3.16	4500	37.33	7.02	8500
50/1	1750	90	52.50	0.82	1400	52.50	1.53	2600	53.03	2.62	4500	53.03	4.95	8500
60/1	1750	90	58.33	0.74	1400	59.79	1.34	2600	58.92	2.36	4500	58.92	4.45	8500
7/1	1150	90	8.02	3.54	1400	7.80	6.76	2600	7.94	11.49	4500	-	-	-
10/1	1150	90	11.42	2.49	1400	11.36	4.64	2600	10.77	8.47	4500	9.58	17.99	8500
15/1	1150	90	15.60	1.82	1400	15.60	3.38	2600	15.05	6.06	4500	15.05	11.45	8500
20/1	1150	90	19.93	1.42	1400	19.50	2.70	2600	21.15	4.31	4500	21.15	8.15	8500
30/1	1150	90	29.10	0.98	1400	28.01	1.88	2600	30.14	3.03	4500	30.14	5.72	8500
40/1	1150	90	43.53	0.65	1400	39.98	1.32	2600	43.97	2.07	4500	37.33	4.62	8500
50/1	1150	90	52.50	0.54	1400	52.50	1.00	2600	53.03	1.72	4500	53.03	3.25	8500
60/1	1150	90	58.33	0.49	1400	59.79	0.88	2600	58.92	1.55	4500	58.92	2.92	8500
7/1	850	90	8.02	2.62	1400	7.80	5.00	2600	7.94	8.49	4500	-	-	-
10/1	850	90	11.42	1.84	1400	11.36	3.43	2600	10.77	6.26	4500	9.58	13.30	8500
15/1	850	90	15.60	1.34	1400	15.60	2.50	2600	15.05	4.48	4500	15.05	8.46	8500
20/1	850	90	19.93	1.05	1400	19.50	2.00	2600	21.15	3.19	4500	21.15	6.02	8500
30/1	850	90	29.10	0.72	1400	28.01	1.39	2600	30.14	2.24	4500	30.14	4.23	8500
40/1	850	90	43.53	0.48	1400	39.98	0.97	2600	43.97	1.53	4500	37.33	3.41	8500
50/1	850	90	52.50	0.40	1400	52.50	0.74	2600	53.03	1.27	4500	53.03	2.40	8500
60/1	850	90	58.33	0.36	1400	59.79	0.65	2600	58.92	1.14	4500	58.92	2.16	8500
7/1	100	90	8.02	0.31	1400	7.80	0.59	2600	7.94	1.00	4500	-	-	-
10/1	100	90	11.42	0.22	1400	11.36	0.40	2600	10.77	0.74	4500	9.58	1.56	8500
15/1	100	90	15.60	0.16	1400	15.60	0.29	2600	15.05	0.53	4500	15.05	1.00	8500
20/1	100	90	19.93	0.12	1400	19.50	0.24	2600	21.15	0.38	4500	21.15	0.71	8500
30/1	100	90	29.10	0.08	1400	28.01	0.16	2600	30.14	0.26	4500	30.14	0.50	8500
40/1	100	90	43.53	0.06	1400	39.98	0.11	2600	43.97	0.18	4500	37.33	0.40	8500
50/1	100	90	52.50	0.05	1400	52.50	0.09	2600	53.03	0.15	4500	53.03	0.28	8500
60/1	100	90	58.33	0.04	1400	59.79	0.08	2600	58.92	0.13	4500	58.92	0.25	8500

Specifications are subject to change without notice

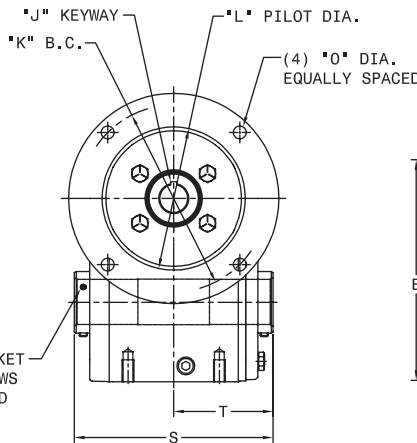
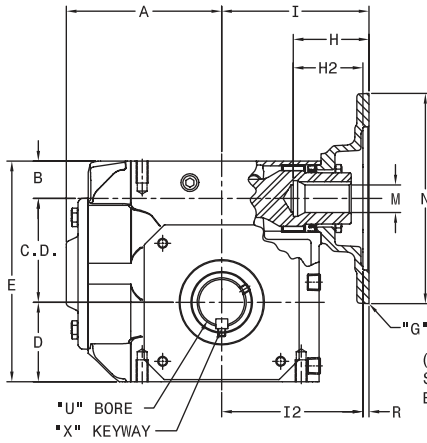
Step 2

Select Input Type

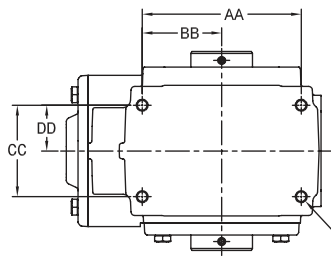
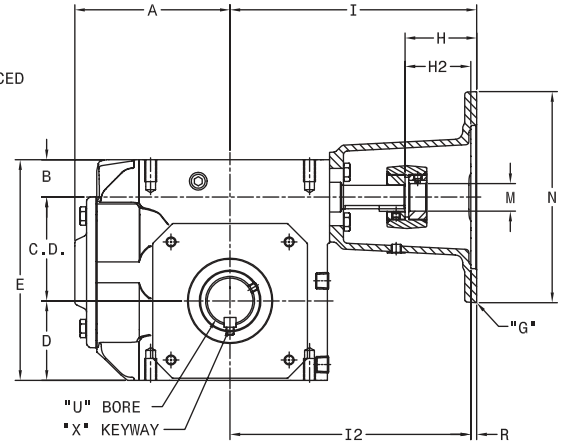
- E - C-face (quill), Select available frame size (G)
- P - C-face (coupled), Select available frame size (G)
- A - Shaft input, Select shaft diameter desired (G)

HERA Model Dimensions

E - C-face (quill)



P - C-face (coupled)

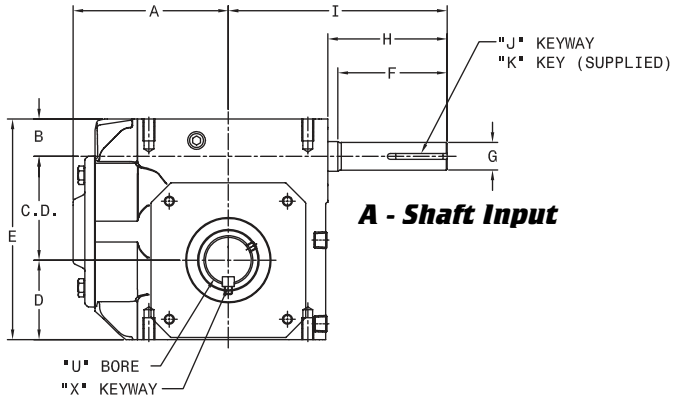


Modified units are available, consult factory.

THESE UNITS CAN BE FURNISHED WITH SOLID OUTPUT SHAFT ON SPECIAL ORDERS.

SHAFT MOUNTED UNITS REQUIRE TORQUE ARMS. TORQUE ARM KITS ARE AVAILABLE.

- (4) EE" NC (TOP AND BOTTOM)
- FF" DEEP TOP
- GG" DEEP BOTTOM



A - Shaft Input

Step 3

Select Output Arrangement

- S - Hollow Bore (choose bore size)
- Shaft Output - choose shaft kit from accessory page
- Note: must order appropriate bore size in unit required for shaft kit

Stock Bores

U	X
Hera35	
3/4	3/16 X 3/32
7/8	3/16 X 3/32
1	1/4 X 1/8
1-1/8	1/4 X 1/8
1-3/16	1/4 X 1/8
1-1/4	1/4 X 1/8
1-7/16	3/8 X 1/8
Hera45	
1	1/4 X 1/8
1-1/8	1/4 X 1/8
1-3/16	1/4 X 1/8
1-1/4	1/4 X 1/8
1-7/16	3/8 X 1/8
1-1/2	3/8 X 1/8
Hera55	
1-3/16	1/4 X 1/8
1-1/4	1/4 X 1/8
1-7/16	3/8 X 3/16
1-1/2	3/8 X 3/16
1-5/8	3/8 X 3/16
1-11/16	3/8 X 3/16
1-3/4	3/8 X 3/16
1-7/8	1/2 X 1/4
1-15/16	1/2 X 3/16
2	1/2 X 3/16
2-3/16	1/2 X 1/8
Hera75	
1-7/16	3/8 X 3/16
1-1/2	3/8 X 3/16
1-15/16	1/2 X 1/4
2	1/2 X 1/4
2-3/16	1/2 X 1/4
2-7/16	5/8 X 5/16
3	3/4 X 3/8
3-7/16	7/8 X 1/4

Model Dimensions

Model	C.D.	A	B	D	E	AA	BB
Hera35	2.509	4.25	1.178	2.062	5.750	4.188	2.094
Hera45	3.263	4.88	1.175	2.500	6.938	5.000	2.500
Hera55	3.675	6.15	2.200	3.500	9.375	7.500	3.750
Hera75	4.287	8.36	2.650	4.438	11.375	8.500	4.250

Model	CC	DD	EE	FF	GG	S	T
Hera35	2.750	1.375	5/16 UNC	.63	.63	5.50	2.75
Hera45	2.875	1.438	3/8 UNC	.69	.69	6.25	3.13
Hera55	4.000	2.000	7/16 UNC	.88	.88	7.50	3.75
Hera75	5.000	2.500	5/8 UNC	1.00	1.00	9.50	4.75

Shaft Input Dimensions

Model	Size Ref.	F	G	H	I	J	K	
Hera35AS	18	1.56	.6245/.6235	1.94	4.88	3/16 X 3/32	3/16 SQ X 1-1/4	
	21	1.81		2.19	5.13			
	24	2.00	.7495/.7485	2.38	5.31	3/16 X 3/32	3/16 SQ X 1-1/2	
	26	2.81		3.19	6.31			
Hera45AS	30	3.44	.8745/.8735	3.76	6.88	3/16 X 3/32	3/16 SQ X 1-1/2	
	32	4.00		4.32	7.44			
	Hera55AS	32	2.07	.8745/.8735	2.38	6.75	3/16 X 3/32	3/16 SQ X 1-1/2
		38	3.70	.9995/.9985	4.01	8.38		
42		4.88	1.2495/1.2485	5.19	9.56	3/16 X 3/32	3/16 SQ X 1-1/2	
Hera75AS	32	2.07	.8745/.8735	2.38	7.63			3/16 X 3/32
	42	4.00	1.2495/1.2485	4.31	9.56	1/4 X 1/8	1/4 SQ X 2-1/4	
	52	5.00		5.44	10.69		1/4 SQ X 3	

C-Face Input Dimensions

C-FLANGE MODELS		ES MODELS				PS MODELS				ES & PS MODELS							
Model	G	H	H2	I	I2	H	H2	I	I2	J	K	L	M	N	O	R	Wt. Lbs.
Hera35	56C	2.27	N/A	4.44	N/A	2.25	N/A	7.57	N/A	3/16 X 3/32	5.875	4.501/4.503	.625	6.63	13/32	.188	30
	143TC	2.38											.875				
Hera45	56C	2.27	N/A	4.63	N/A	2.25	N/A	7.76	N/A	3/16 X 3/32	5.875	4.501/4.503	.625	6.63	13/32	.188	43
	143TC	2.38											.875				
	182TC	N/A	2.89	N/A	5.06	N/A	3.25	N/A	8.76	1/4 X 1/8	7.250	8.501/8.503	1.125	9.00	17/32	.188	50
Hera55	56C	2.27	N/A	5.57	N/A	2.25	N/A	9.00	N/A	3/16 X 3/32	5.875	4.501/4.503	.625	6.63	13/32	.188	82
	143TC	2.38											.875			.188	
	182TC	N/A	2.89	N/A	6.33	N/A	3.25	N/A	10.00	1/4 X 1/8	7.250	8.501/8.503	1.125	9.00	17/32	.188	90
	213TC		3.63							5/16 X 5/32			1.375				
Hera75	256TC		3.88			N/A				3/8 X 3/16			1.625				
	56C	2.27	N/A	6.45	N/A	2.25	N/A	9.88	N/A	3/16 X 3/32	5.875	4.501/4.503	.625	6.63	13/32	.188	167
	143TC	2.38											.875				
	182TC	N/A	2.89	N/A	7.21	N/A	3.25	N/A	10.88	1/4 X 1/8	7.250	8.501/8.503	1.125	9.00	17/32	.188	175
213TC		3.63							5/16 X 5/32			1.375					
256TC		3.88				N/A			N/A	3/8 X 3/16			1.625				

Specifications are subject to change without notice

Step 4

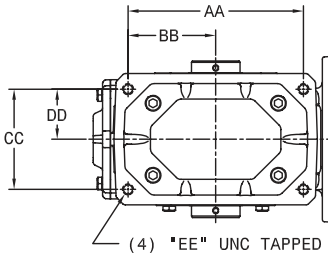
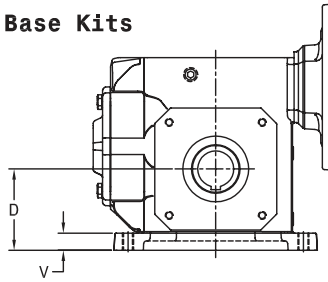
Select Accessories

- B - interchange base (required if interchanging to larger size worm gear reducer) provides appropriate "D" dimension and tapped mounting hole dimensions & pattern
- T - Base (includes B-base above) provides means to bolt unit from above mounting surface and matches competitor worm mounting base bolt patterns
- F - flanges, provide means for side mounting
- Other available accessories: Vertical base kits, torque arm kits, C-flange adapter kits

Plug-In Shaft Kits

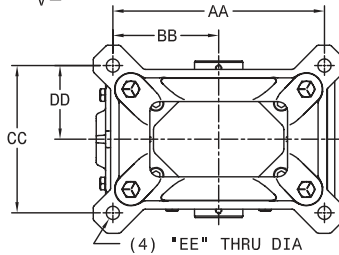
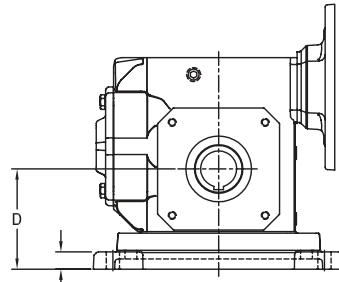
Series	Size Ref.	Stock Bore Required	Double Ext Kit No.	Single Ext Kit No.	S	T	T2	U	V	W	W2	X	Y	Key(s) Furnished	WT. LBS.
Hera35	18	1.438	0259-00135	0259-00136	8.62	4.31	2.97	.875	2.05	1.38	1.34	3/16 x 3/32	1.13	3/16 SQ X 1-1/8	4.1
	21		0259-00137	0259-00138	9.38	4.69	2.97	1.000	2.43	1.76	1.72	1/4 X 1/8	1.50	1/4 SQ X 1-1/2	4.4
	24		0259-00139	0259-00140	10.28	5.14	2.97	1.125	2.88	2.21	2.17	1/4 X 1/8	1.75	1/4 SQ X 1-3/4	4.9
Hera45	24	1.438	0259-00092	0259-00093	10.28	5.14	3.45	1.125	2.50	1.77	1.69	1/4 X 1/8	1.50	1/4 SQ X 1-1/2	5.2
	26		0259-00094	0259-00095	11.25	5.63	3.44	1.125	2.99	2.25	2.18	1/4 X 1/8	2.00	1/4 SQ X 1-3/4	5.7
	30		0259-00096	0259-00097	13.50	6.75	3.45	1.250	4.11	3.38	3.30	1/4 X 1/8	2.25	1/4 SQ X 2-1/4	6.6
	32		0259-00098	0259-00099	14.12	7.06	3.45	1.375	4.42	3.69	3.64	5/16 X 5/32	2.50	5/16 SQ X 2-3/8	7.3
Hera55	32	1.938	0259-00117	0259-00118	14.12	7.06	4.06	1.375	3.91	3.06	3.00	5/16 X 5/32	2.50	5/16 SQ X 2-3/8	10.0
	38		0259-00119	0259-00120	15.50	7.75	4.06	1.625	4.60	3.75	3.69	3/8 X 3/16	2.81	3/8 SQ X 2-1/2	11.8
	42		0259-00121	0259-00122	16.24	8.12	4.06	1.875	4.97	4.12	4.03	1/2 X 1/4	3.31	1/2 SQ X 3-1/4	13.8
Hera75	42	2.438	0259-00153	0259-00154	16.24	8.12	5.12	1.875	4.00	3.06	3.00	1/2 X 1/4	2.56	1/2 SQ X 2-1/2	TBD
	52		0259-00155	0259-00156	18.12	9.06	5.12	2.000	4.94	4.00	3.94	1/2 X 1/4	3.56	1/2 SQ X 3-1/2	TBD
	60		0259-00164	0259-00165	20.00	10.00	5.12	2.250	5.88	4.94	4.88	1/2 X 1/4	3.56	1/2 SQ X 3-1/2	TBD

Base Kits



B-Base Kit

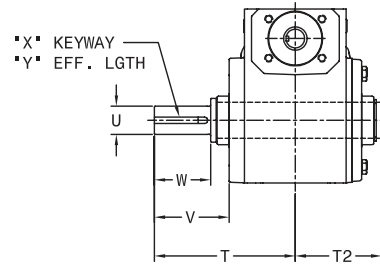
Hera B-bases provide a drop-in mounting solution when replacing comparable rated worm gear reducers.



T-Base Kit

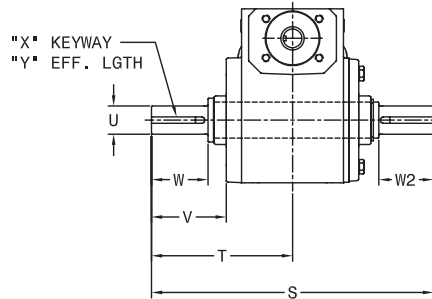
Hera T-bases provide a drop-in mounting solution when replacing comparable rated worm gear reducers that also are utilizing a horizontal mounting base.

Plug-In Shaft Kits



Single Extended

Note: Single Extended Kit can be installed from either side.



Double Extended

B - Base Kits

Series	B-Base Kit No.	Shipping Wt. Lbs.	Size Ref.	D	V	AA	BB	CC	DD	EE
Hera35	0259-00130	1.3	21	2.281	0.22	5.00	2.50	2.88	1.44	3/8 UNC
	0259-00131	2.0	24	2.500	0.38	5.00	2.50	2.88	1.44	3/8 UNC
Hera45	0259-00082	2.5	26	2.938	0.38	6.38	3.19	3.38	1.69	3/8 UNC
	0259-00083	4.3	30	3.25	0.69	7.00	3.50	4.00	2.00	7/16 UNC
Hera55	0259-00084	5.0	32	3.500	0.88	7.50	3.75	4.00	2.00	7/16 UNC
	0259-00112	4.0	38	3.875	0.38	8.50	4.25	4.75	2.38	1/2 UNC
Hera75	0259-00113	7.5	42	4.438	0.88	8.50	4.25	5.00	2.50	5/8 UNC
	0259-00150	TBD	52	5.313	0.79	11.00	5.50	5.81	2.91	5/8 UNC
	0259-00162	TBD	60	6.500	1.50	12.75	6.38	6.38	3.19	5/8 UNC

T - Base Kits

Series	T-Base Kit No.	Shipping Wt. Lbs.	Size Ref.	D	V	AA	BB	CC	DD	EE
Hera35	0259-00132	3.0	18	2.75	0.63	5.75	2.88	4.5	2.25	0.41
	0259-00133	4.8	21	3.000	0.66	6.38	3.19	4.69	2.34	0.47
	0259-00134	9.0	24	3.25	0.69	7.06	3.53	4.88	2.44	0.47
Hera45	0229-03062	6.0	24	3.25	0.69	7.06	3.53	4.88	2.44	0.47
	0259-00085	7.0	26	3.688	0.69	8.00	4.00	5.25	2.63	0.53
	0259-00086	9.5	30	4.000	0.69	8.44	4.22	5.88	2.94	0.53
	0259-00087	11.5	32	4.375	0.81	9.5	4.75	6.13	3.06	0.53
Hera55	0259-00114	6.5	32	4.375	0.81	9.5	4.75	6.13	3.06	0.53
	0259-00115	12.5	38	4.812	0.88	10.38	5.19	7.00	3.50	0.59
Hera75	0259-00116	19	42	5.438	0.94	11.13	5.56	7.63	3.81	0.66
	0259-00151	TBD	42	5.438	0.94	11.13	5.56	7.63	3.81	0.66
	0259-00152	TBD	52	6.438	1.06	14.13	7.06	8.38	4.19	0.78
	0259-00163	TBD	60	7.750	1.12	16.50	8.25	9.50	4.75	0.91

Additional Accessories Available

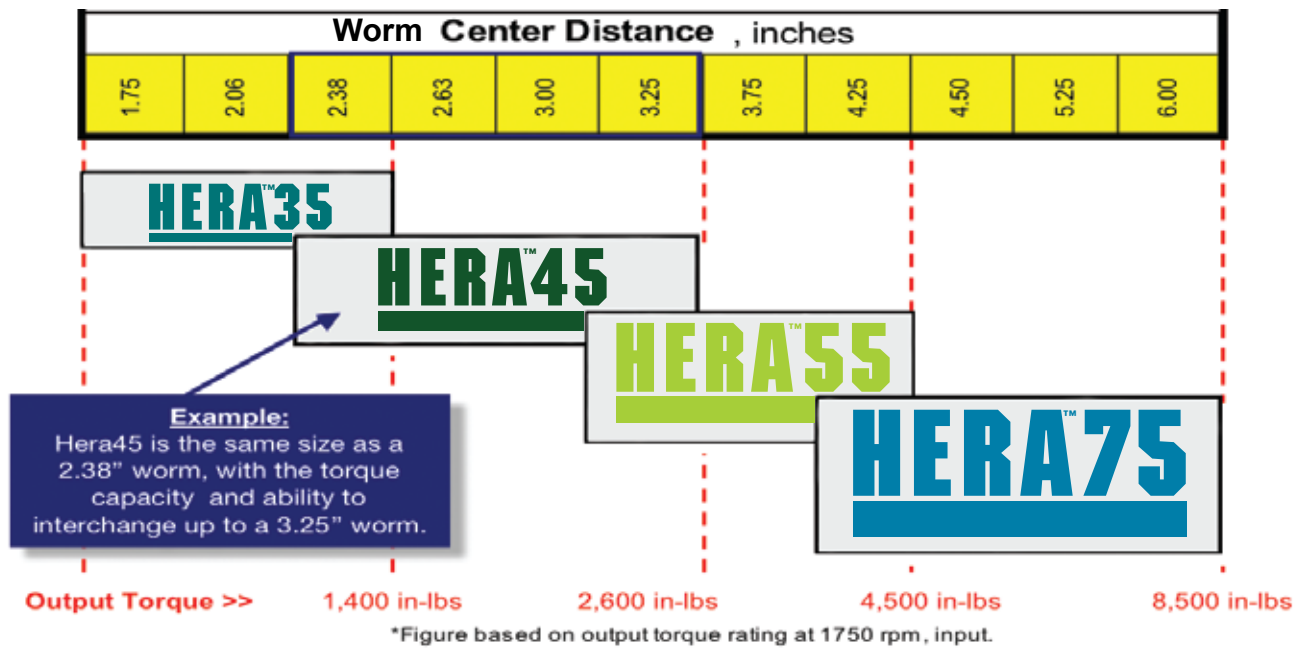


Series	Part No.	Size Ref.	Part No.	Part No.
Hera35	0259-00141	18	0259-00159	0259-00125
	0259-00142	21		
	0259-00143	24		
Hera45	0259-00088	24	0259-00106	0259-00078
	0259-00089	26		
	0259-00090	30		
Hera55	0259-00123	32	0259-00160	0259-00107
	0259-00124	42		
Hera75	0259-00157	42	0259-00161	0259-00144
	0259-00158	52		
	0259-00166	60		

Contact Factory for Dimensions on above kits

Specifications are subject to change without notice

Worm Reducer Interchange



Competitor Interchange Guide



Solid Output Shaft-NEMA C Flange Reducer (Quill Input)											
CENTER DISTANCE (Inches)	1.75	2.06	2.38	2.62	3.00	3.25	3.75	4.25	5.25	6.00	
HERA - ES w/plug-in shaft kit	Hera35ES	Hera35ES*	Hera35ES*	Hera45ES	Hera45ES*	Hera45ES*	Hera45ES*	Hera55ES	Hera55ES*	Hera55ES*	Hera75ES
BALDOR	F918	F921	F924	F926	F930	F932	F938	---	---	---	---
BOSTON	F718	F721	F724	F726	F730	F732	F738	---	F752	F760	---
Dodge-Tiqgear-2	17Q	20Q	23Q	26Q	30Q	---	35Q	---	---	---	---
Falk-Omnibox	1175WBM	1206WBM	1238WBM	1262WBM	1300WBM	1325WBM	---	1425WBM	1525WBM	1600WBM	---
Morse-Raider	175Q	206Q	237Q	262Q	300Q	325Q	375Q	450Q	516Q	600Q	---
Solid Output Shaft-NEMA C Flange Reducer (Coupled Input)											
CENTER DISTANCE (Inches)	1.75	2.06	2.38	2.62	3.00	3.25	3.75	4.25	5.25	6.00	
HERA - PS w/plug-in shaft kit	Hera35PS	Hera35PS*	Hera35PS*	Hera45PS	Hera45PS*	Hera45PS*	Hera45PS*	Hera55PS	Hera55PS*	Hera55PS*	Hera75PS
BALDOR	LF918	LF921	LF924	LF926	LF930	LF932	LF938	---	---	---	---
BOSTON	RF718	RF721	RF724	RF726	RF730	RF732	RF738	---	RF752	RF760	---
Dodge-Tiqgear-2	17A	20A	23A	26A	30A	---	35A	---	---	---	---
Falk-Omnibox	1175WBF	1206WBF	1238WBF	1262WBF	1300WBF	1325WBF	---	1425WBF	1525WBF	1600WBF	---
Morse-Raider	175C	206C	237C	262C	300C	325C	375C	450C	516C	600C	---
Solid Output Shaft-Non-Flanged Reducer (Basic Unit)											
CENTER DISTANCE (Inches)	1.75	2.06	2.38	2.62	3.00	3.25	3.75	4.25	5.25	6.00	
HERA - AS w/plug-in shaft kit	Hera35AS	Hera35AS*	Hera35AS*	Hera45AS	Hera45AS*	Hera45AS*	Hera45AS*	Hera55AS	Hera55AS*	Hera55AS*	Hera75AS
BALDOR	S918	S921	S924	S926	S930	S932	S938	---	S952	S960	---
BOSTON	718	721	724	726	730	732	738	---	752	760	---
Dodge-Tiqgear-2	17S	20S	23S	26S	30S	---	35S	---	---	---	---
Falk-Omnibox	1175WB	1206WB	1238WB	1262WB	1300WB	1325WB	---	1425WB	1525WB	1600WB	---
Morse-Raider	175U	206U	237U	262U	300U	325U	375U	450U	516U	600U	---
Hollow Output Shaft-NEMA C Flange Reducer (Quill Input)											
CENTER DISTANCE (Inches)	1.75	2.06	2.38	2.62	3.00	3.25	3.75	4.25	5.25	6.00	
HERA - ES	Hera35ES	Hera35ES*	Hera35ES*	Hera45ES	Hera45ES*	Hera45ES*	Hera45ES*	Hera55ES	Hera55ES*	Hera55ES*	Hera75ES
BALDOR	HF918	HF921	HF924	HF926	HF930	HF932	HF938	---	---	---	---
BOSTON	HF718	HF721	HF724	HF726	HF730	HF732	HF738	---	---	---	---
Dodge-Tiqgear-2	17QH	20QH	23QH	26QH	30QH	---	35QH	---	---	---	---
Falk-Omnibox	1175WBQM	1206WBQM	---	1262WBQM	1300WBQM	1325WBQM	---	1425WBQM	1525WBQM	1600WBQM	---
Morse-Raider	175QH	206QH	237QH	262QH	300QH	325QH	375QH	450QH	516QH	600QH	---
Hollow Output Shaft-NEMA C Flange Reducer (Coupled Input)											
CENTER DISTANCE (Inches)	1.75	2.06	2.38	2.62	3.00	3.25	3.75	4.25	5.25	6.00	
HERA - PS	Hera35PS	Hera35PS*	Hera35PS*	Hera45PS	Hera45PS*	Hera45PS*	Hera45PS*	Hera55PS	Hera55PS*	Hera55PS*	Hera75PS
BALDOR	HLF918	HLF921	HLF924	HLF926	HLF930	HLF932	HLF938	---	---	---	---
BOSTON	HRF718	HRF721	HRF724	HRF726	HRF730	HRF732	HRF738	---	---	---	---
Dodge-Tiqgear-2	17AH	20AH	23AH	26AH	30AH	---	35AH	---	---	---	---
Falk-Omnibox	1175WBQF	1206WBQF	---	1262WBQF	1300WBQF	1325WBQF	---	1425WBQF	1525WBQF	1600WBQF	---
Morse-Raider	175CH	206CH	237CH	262CH	300CH	325CH	375CH	450CH	516CH	600CH	---
Hollow Output Shaft - Non-Flanged Reducer (Basic Unit)											
CENTER DISTANCE (Inches)	1.75	2.06	2.38	2.62	3.00	3.25	3.75	4.25	5.25	6.00	
HERA - AS	Hera35AS	Hera35AS*	Hera35AS*	Hera45AS	Hera45AS*	Hera45AS*	Hera45AS*	Hera55AS	Hera55AS*	Hera55AS*	Hera75AS
BALDOR	HS918	HS921	HS924	HS926	HS930	HS932	HS938	---	---	---	---
Boston	H718	H721	H724	H726	H730	H732	H738	---	---	---	---
Dodge-Tiqgear-2	17SH	20SH	23SH	26SH	30SH	---	35SH	---	---	---	---
Falk-Omnibox	1175WBQ	1206WBQ	1238WBQ	1262WBQ	1300WBQ	1325WBQ	---	1425WBQ	1525WBQ	1600WBQ	---
Morse-Raider	175UH	206UH	237UH	262UH	300UH	325UH	375UH	450UH	516UH	600UH	---

*B-Interchange Base Kit required for foot mounting (see accessory page)
 Information for reference only, consult factory for information on your specific application.



Phone: 605-225-0360 Fax: 605-225-0567
 Email: hubsales@regalbeloit.com
www.hubcityinc.com

